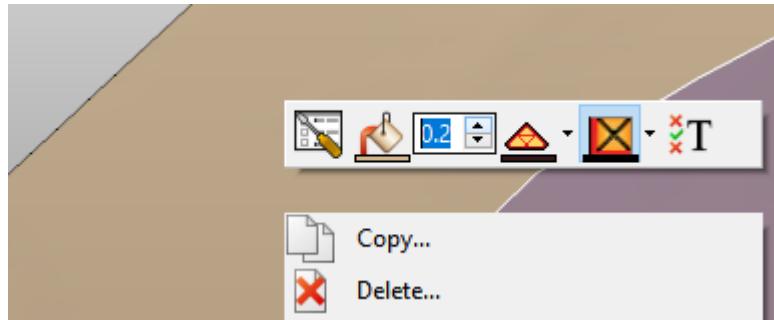


Transparency – objects and properties

Object transparency can be set as part of the graphic style settings.



Properties can also be made transparent by drawing a line within the colormap accessed from the style editor or secondary style toolbar.



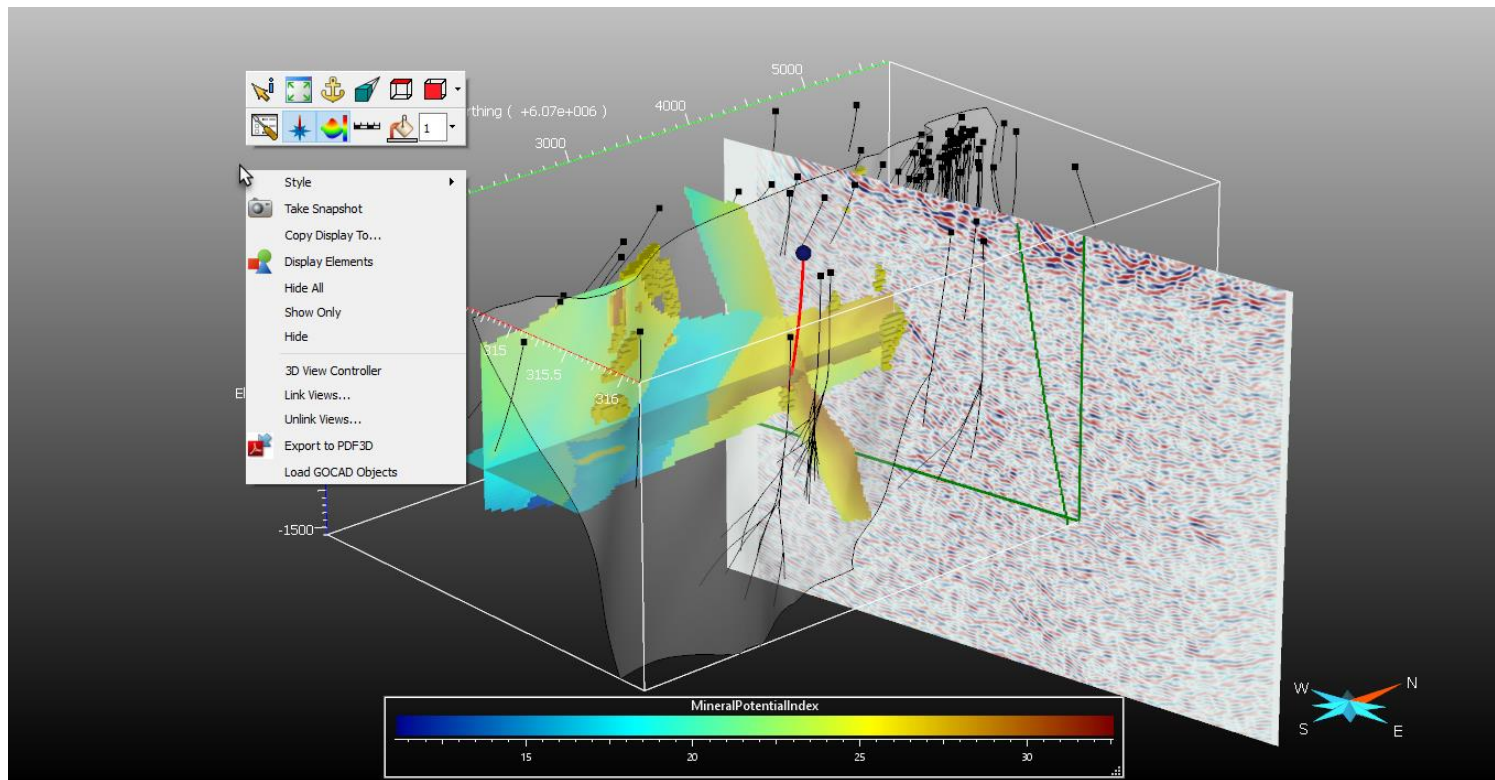
With the cursor in the colorbar, draw a line with your mouse. To lock the transparency (as shown above), hold down the **Alt** key at the same time. To create a binary transparency, use the **Ctrl** key.




Click using the middle mouse button in the colorbar and the transparency settings are reset to none.

3D Viewer tips and tricks – full screen and style settings

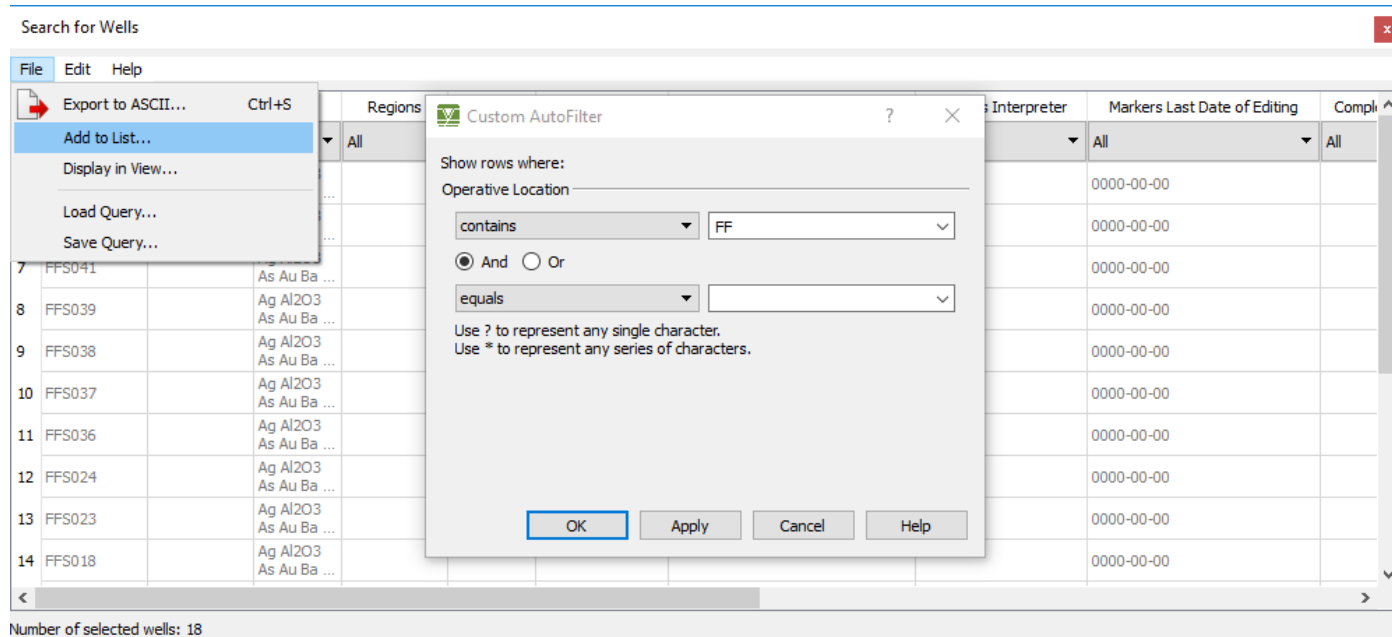
Quickly access the most common 3D Viewer style settings by right-clicking in the background, either in regular or full-screen mode (press F11 to toggle on and off)



Well search tool

The Well Search tool  is very useful when there are many drillholes in a project. Wells can be search by hole-id (or a string within the hole-id), well log, markers, even holes that are greater or less than a specific length (great for filtering our delineation drilling).

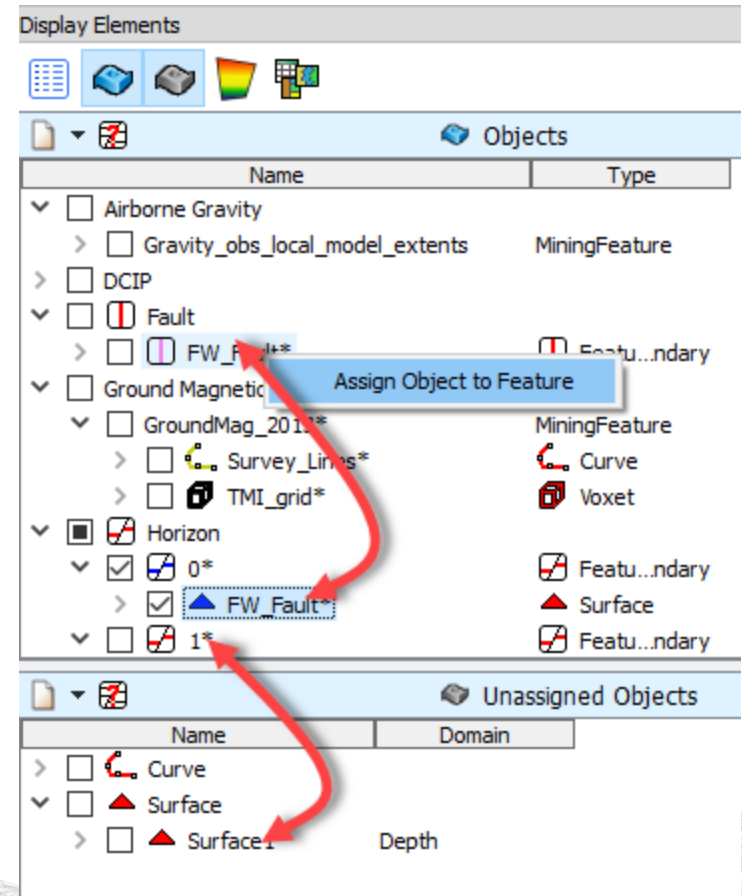
When the search is returned, the result can be placed in a well list.



Drag and drop to reassign geological feature

Features are user-defined names for a geologic feature or data grouping within the object display elements panel. Feature names can match object names, or not.

In addition to the *RMB > Assign Geologic Feature* tool, you can drag an object to the feature that you want to assign it to, if a feature already exists.



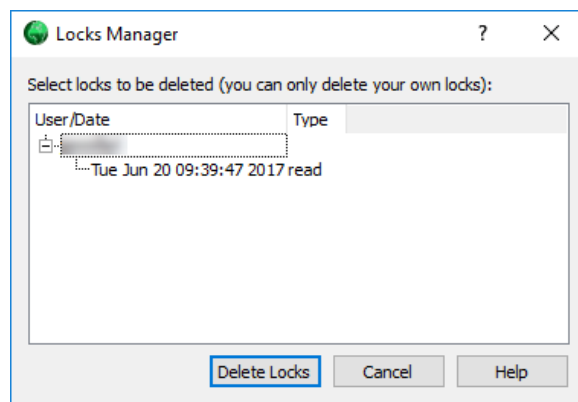
Project locks

Lock files manage the reading and writing of SKUA-GOCAD projects. When you open a project, a unique lock file is automatically created in the project folder.

If you terminate SKUA-GOCAD in the middle of a process, you may need to delete the lock file before you can save the project after you reopen it.

 SKUA-GOCAD - [redacted] (Locked) [scenario: Project]

If it is your lock file (identified by your computer login id), you can remove it from the *File > Manage Locks...* dialog box.

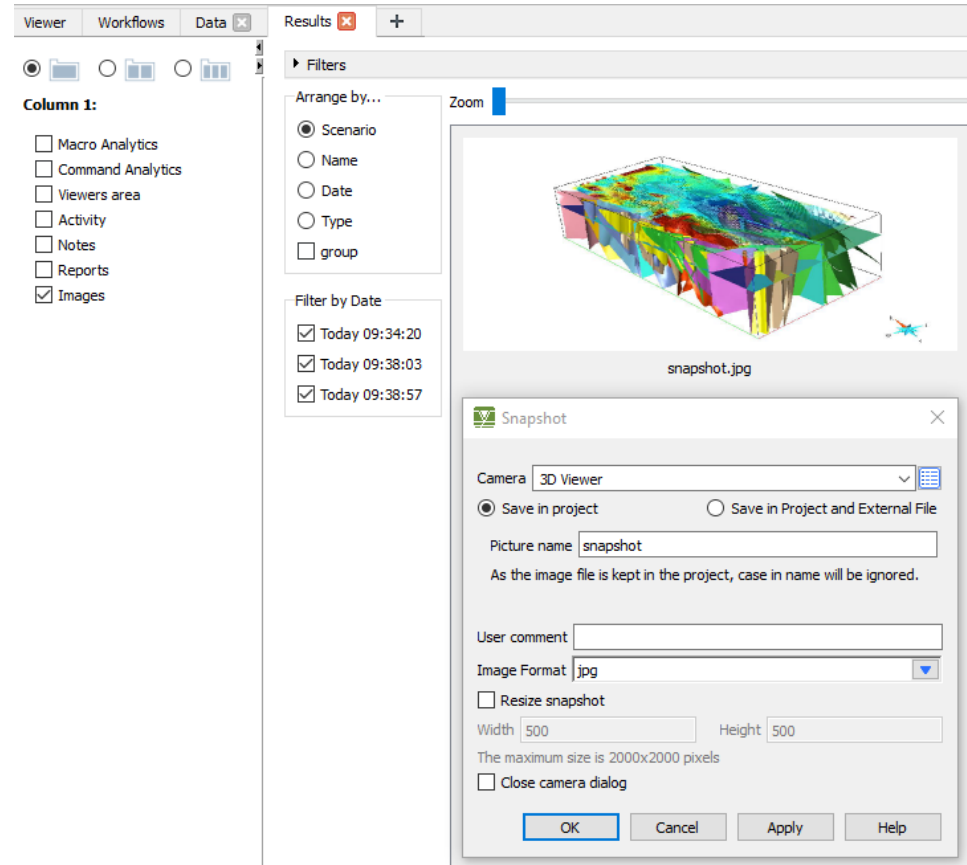


If it is another person's lock file, you can either delete it from the project folder prior to opening the project, or simply save the project with a new name.

Saving a snapshot

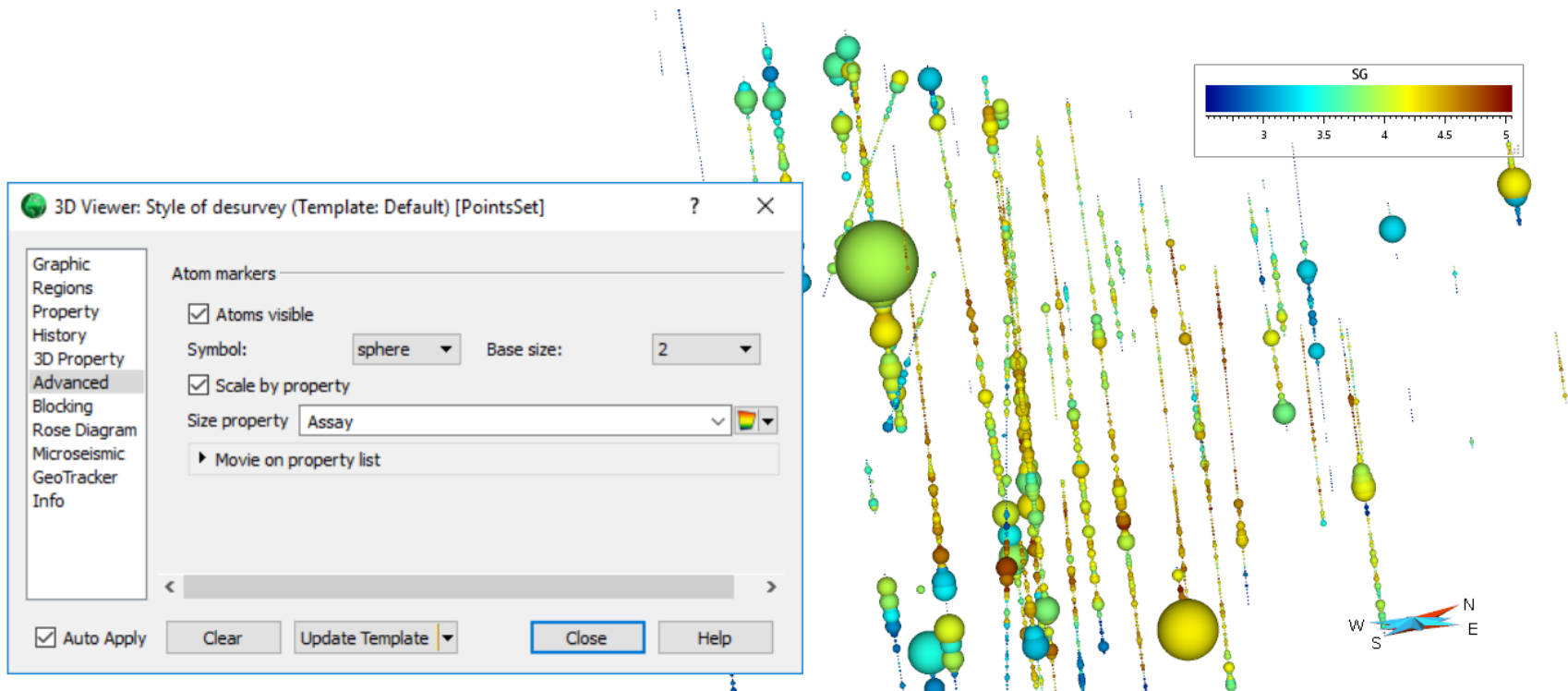
The 3D Viewer saves snapshots in the project folder of your project (and optionally to an external file.)

Access them from within your project in the Results tab. From here, you can filter and arrange them by various categories.



Scale node size by property range

Scale the nodes on PointsSets, Curves or Surfaces in the *Advanced* style settings for the object.

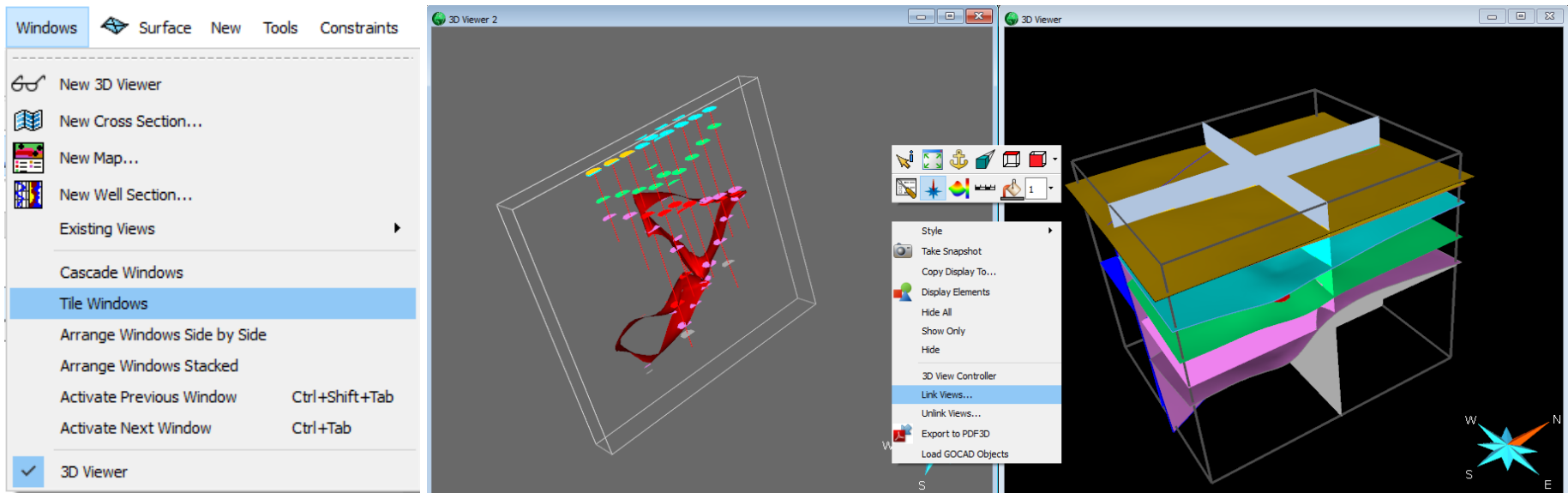


In the *Symbol* drop-down, set it to anything other than *point*.

Tile multiple windows

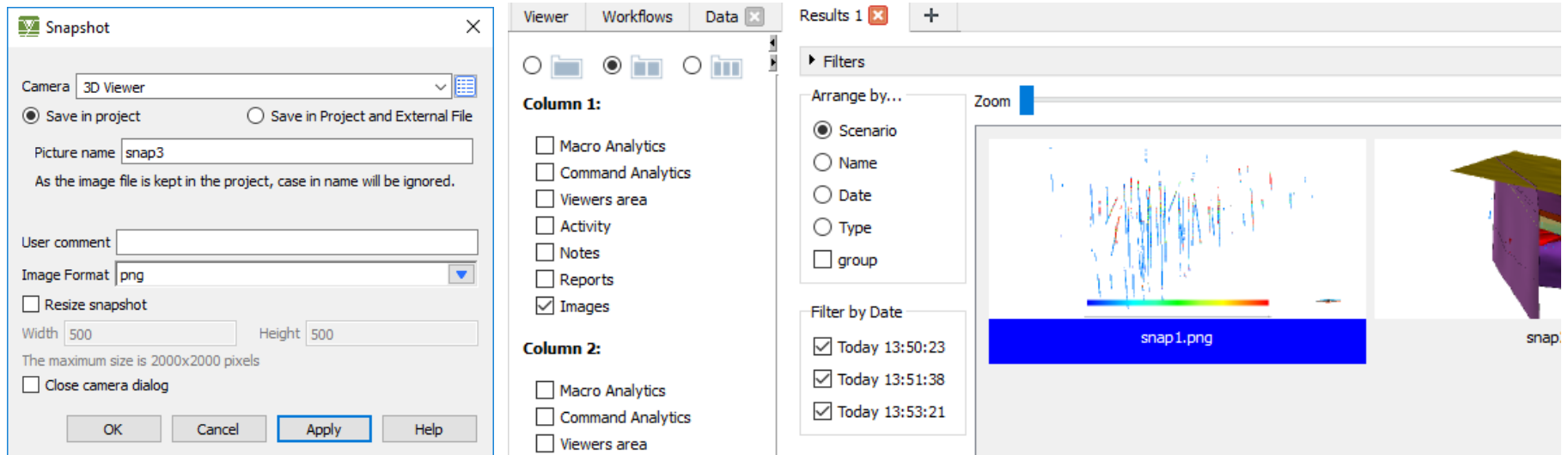
You can tile multiple windows (3D Viewers or Cross Sections, etc.) in the GOCAD window by using the tiling options in the Windows menu.

When tiled, the Object display list reflects the active window. (Don't forget—you can link views.)



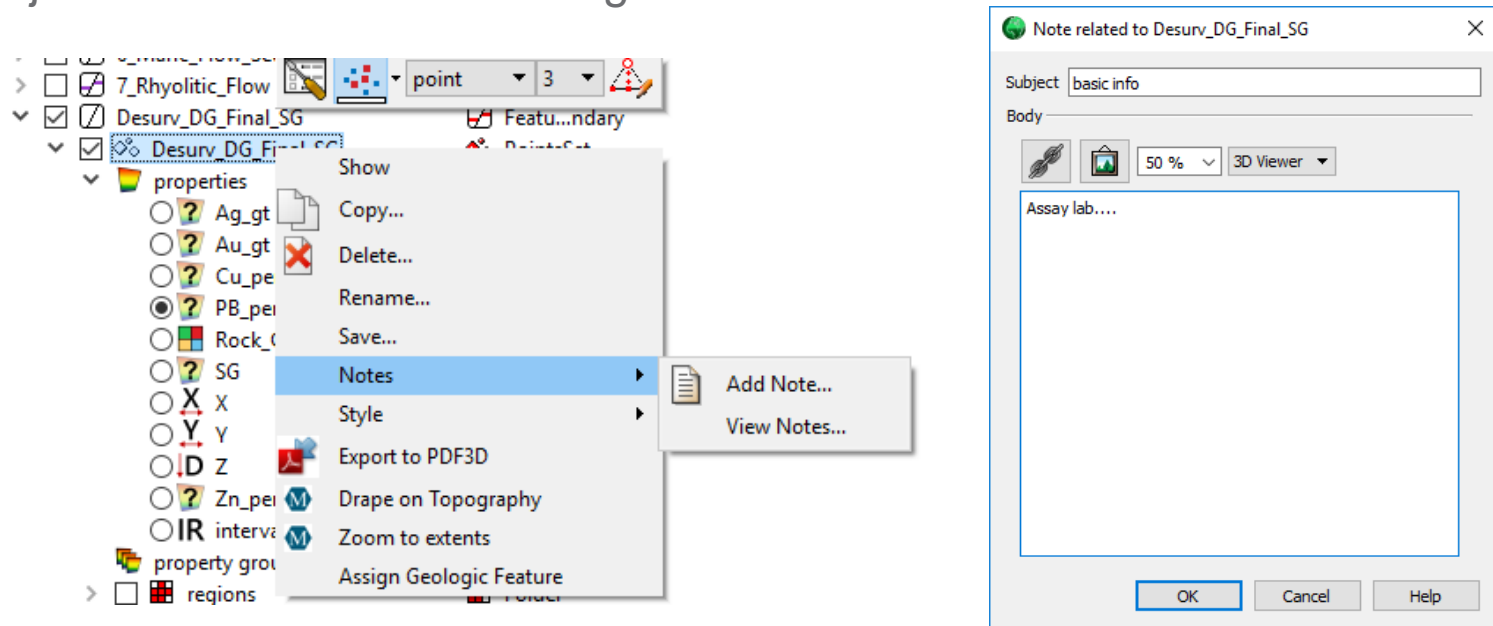
Snapshots stored in your project

When snapshots are taken in v15.5, they are stored in the project and as an external file. They can be accessed and searched in the Results tab.



Attaching notes to objects

Notes are useful to record modelling decisions or information about your data. They can easily be attached to objects by right-clicking on an object. Notes can include images and links to external files.



All notes in a project can be accessed and searched within the Results tab.