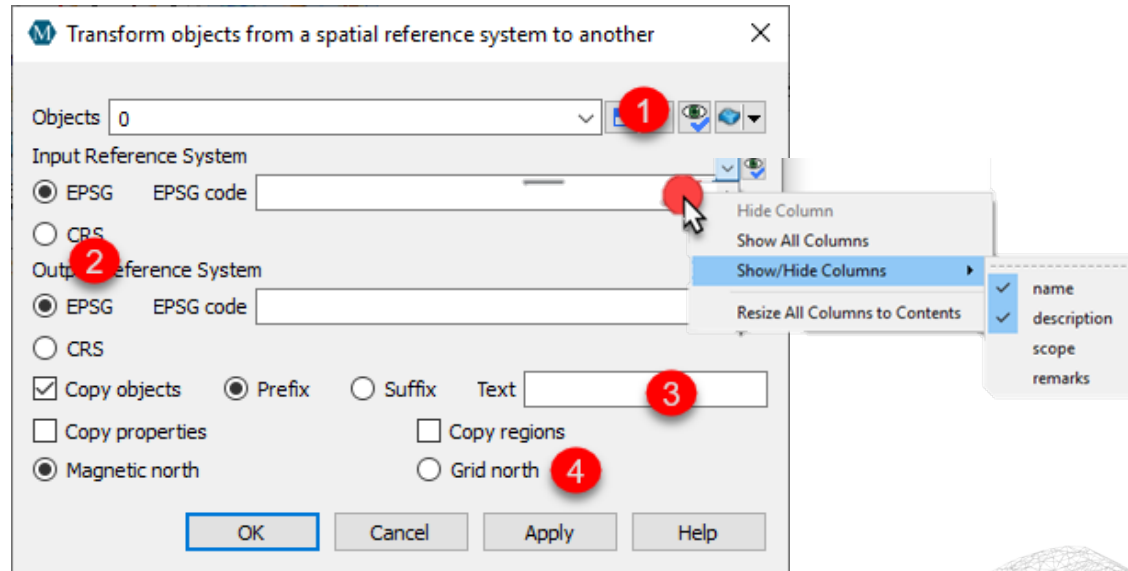


Coordinate Reference System re-projection

This command, found in the **Tools** menu of upcoming v17u3, transforms atomic objects, drillholes, and grid objects between CRS or EPSG codes.

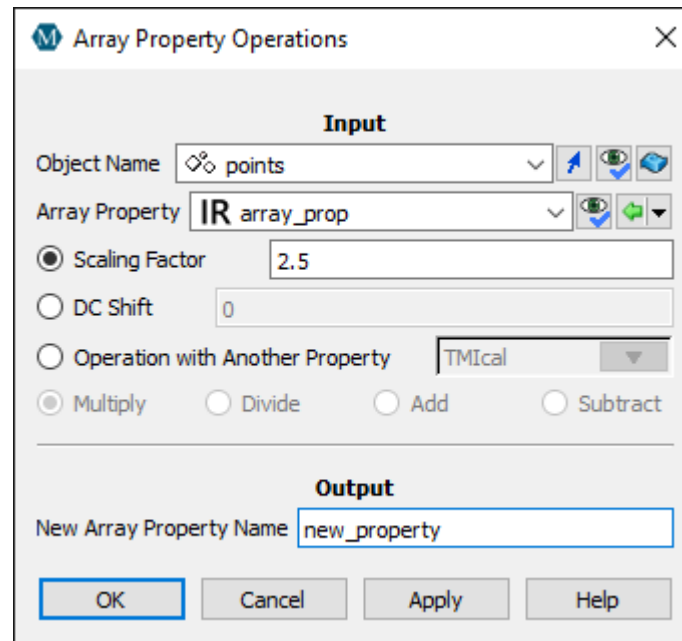
- (1) Multi-select input objects to transform.
- (2) Select a combination of input and output CRS or EPSG codes. CRS can be custom, but must be in .wkt. EPSG description can be displayed (RMB) and filtered.



- (3) Copy the input objects, properties, and regions with a user-defined prefix or suffix.
- (4) For drillholes - define how they are desurveyed. If desurveyed relative to Magnetic north, only the collar and path are translated. If desurveyed relative to Grid north, a translation and rotation is applied.

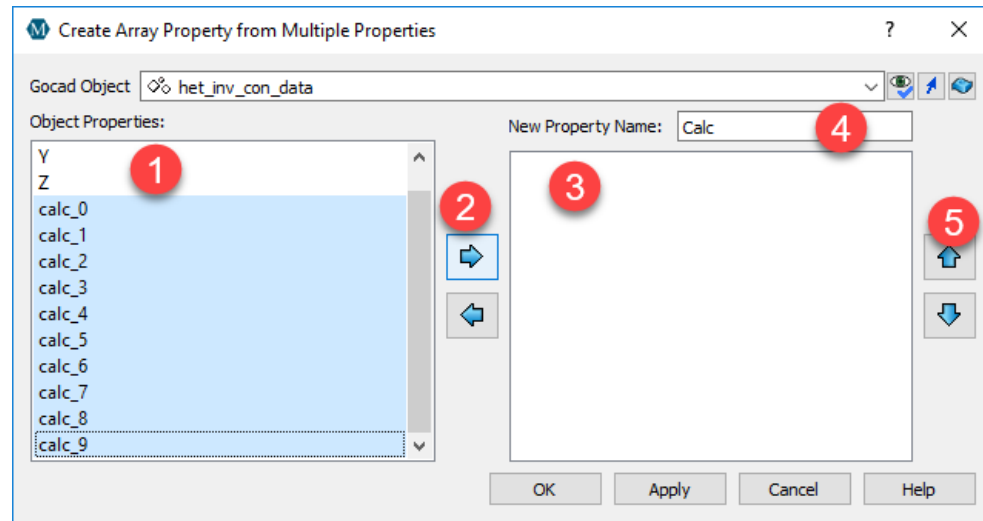
Operations on array properties

This command, found in the Property menu, allows the user to perform various operations (scaling, DC shift or operations with other scalar properties) on a multi-element array property.



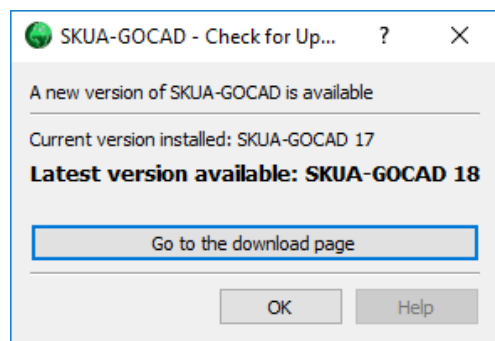
Create array property from scalar properties

This command, found in the Property menu, creates a multi-dimensional array property from user-selected properties:



- (1) Select the properties.
- (2) Move them to the right panel with the blue arrow.
- (3)-(4) Properties in the right column will be written to a new array property with the appropriate number of elements in the order they are listed.
- (5) The order can be changed using the up/down arrows.

FAQ - Can I use SKUA-GOCAD 18 with GOCAD Mining Suite 17 update2?




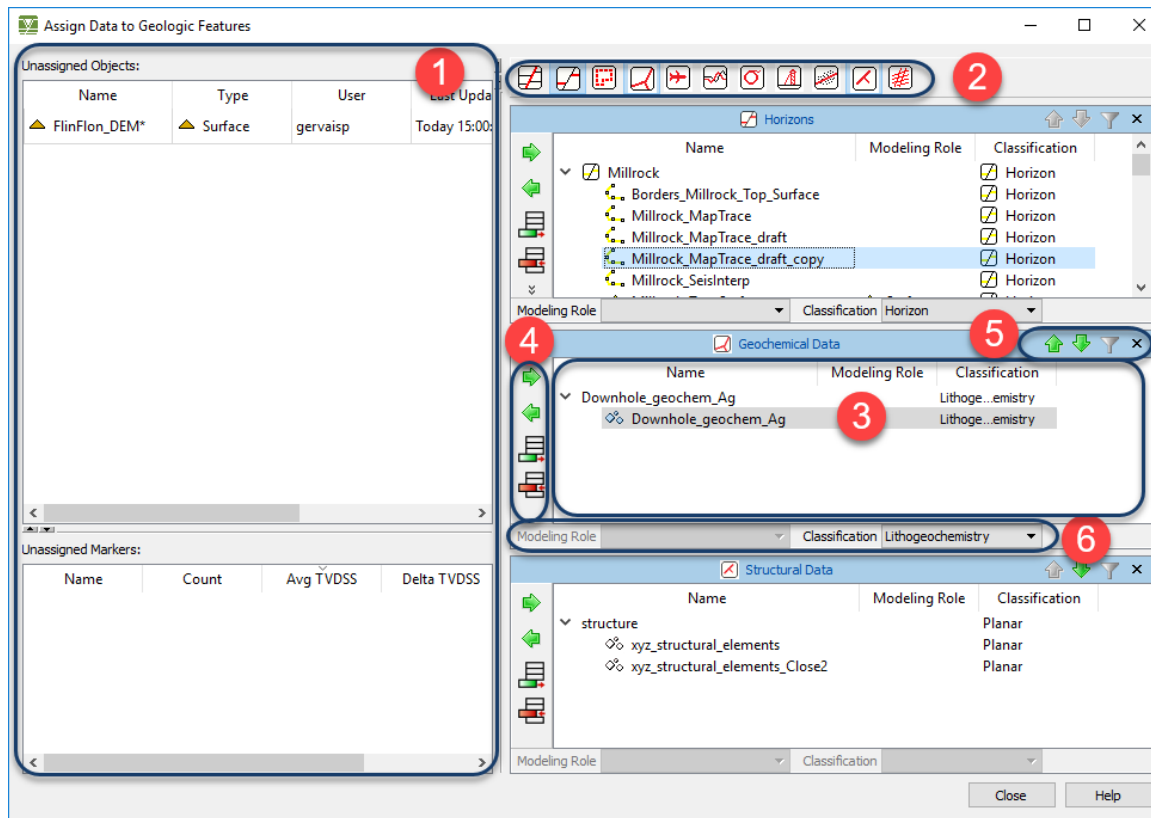
Yes, you can if you want to, but with some caveats:

- GOCAD Mining Suite and its functionalities have not yet been migrated to this version and therefore will not be available in version 18.
- SKUA-GOCAD is not backwards compatible. To open a v18 project in earlier versions you need to save all objects and resources, such as Rock Classifications and Colormaps, and import them into GOCAD Mining Suite 17 update2.

If you haven't installed v17 update2 and are under active maintenance, please do!

Assign geological features

The *Assign Data to Geologic Features* window now has mining categories to facilitate more efficient organization of the Object Display Lists. 



1. Examine modelling objects that are not associated with features. All objects except Wells, SGrids and Voxets appear in this list.
2. Show or hide the list of features of the category types that can be assigned to data.
3. Work with features (of the type selected at the top of the window), assigned objects, and find information about features and objects.
4. Create, edit, and delete features. Assign or remove objects from features. Access the Stratigraphic Column Editor for horizon features.
5. Expand the filtering area and use tools to filter the list of features and objects.
6. Assign or change the modelling role and feature classification for selected objects.

Details of the functionality of this window are available in the SKUA-GOCAD help.